

deliver results
act like family build customer success
make the future better
work together globally
behave like owners



SAFETY ORIENTATION

We're Glad You Are Part Of Our Family!

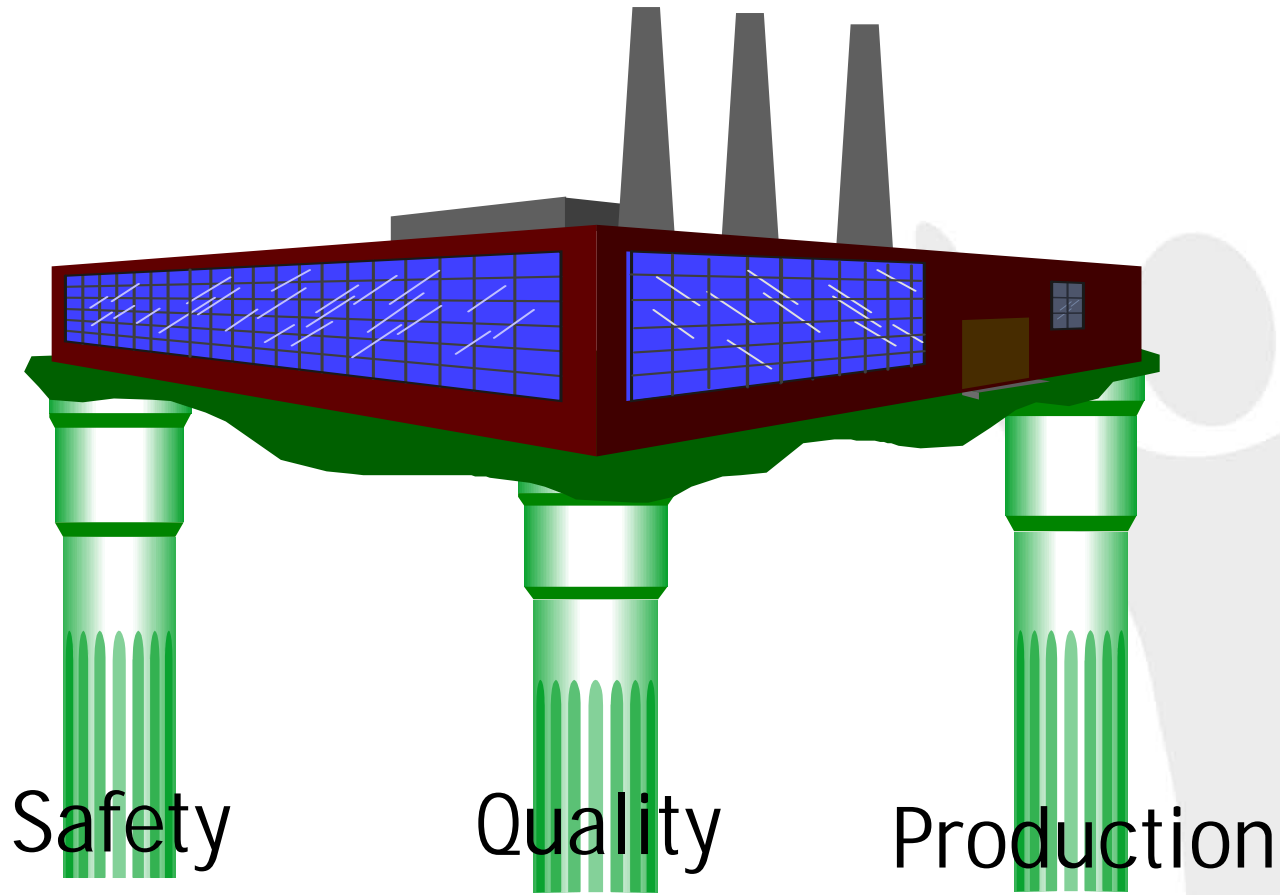


OUR SAFETY EXPECTATIONS

- We Will Have A Safe Work Environment
- You Are Responsible For Your Safety
- You Will Be Required To Complete Safety Activities
- You Are Required To Immediately Report Safety Opportunities
- Safety Opportunities Are Taken Seriously
- Everyone Leaves Work Healthy



PILARS OF OUR ORGANIZATION



OUR RESPONSIBILITIES - EMPLOYER

- Define, Measure and Reward Our Safety Performance Expectations
- Establish Open Communication
- Comply With Regulations And Griffith Global Safety Standards



OUR RESPONSIBILITIES - EMPLOYEE

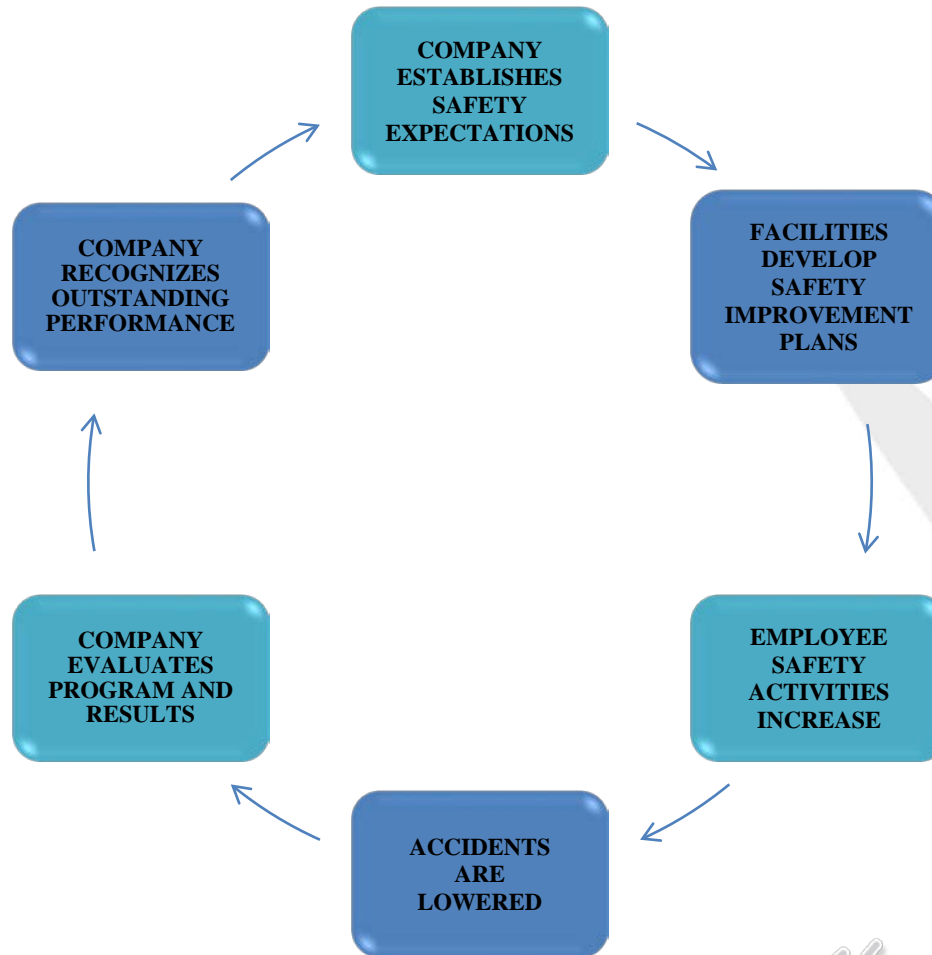
- Help Us Improve Our Safety Culture
- Immediately Report:
 - Safety Opportunities and Solutions
 - Injuries/Illness As Soon As They Occur
- Comply With Company Rules And OSHA Regulations
- Help Maintain Your Training
- Know Your Rights
 - Locate and Read the OSHA Poster



THE ACCIDENT PYRAMID REVISED



ACCIDENT REDUCTION CYCLE



SAFETY COMMITTEE

- A Safety Committee Promotes
 - Communication
 - Ownership
 - Teamwork
 - Pride
- We Try To Insure All Departments Are Represented
- Employees Are Encouraged To Join The Safety Committee



INSPECTIONS

- Pre-Shift
- Daily
- Weekly
- Monthly



ASBESTOS

- Limited Amounts Of Asbestos Are Present In:
 - Chicago
 - Alsip
 - Lithonia
- The Areas Are Either Marked Or Covered
- These Areas Are In Good Condition And Should Pose No Threat To Your Health
- If You Have Questions Please Contact Your Supervisor Or Maintenance Department



BLOOD BORNE PATHOGENS

- Blood Borne Pathogen:
 - Pathogenic microorganisms that are present in human blood, fluids, tissue and other potentially infectious materials that can cause disease in humans.
- Universal Precautions:
 - An Approach To Infection Control In Which All Human Blood And Certain Human Body Fluids Are Treated As If Known To Be Infectious For HIV, HBV, And Other Blood Borne Pathogens.



CONFINED SPACE ENTRY

- A Confined Space Is:
 - An Area Large Enough And So Configured That An Employee Can Bodily Enter And Perform Assigned Work.
 - It Has Limited Or Restricted Means For Entry Or Exit.
 - Is Not Designed For Continuous Employee Occupancy.



CONFINED SPACE ENTRY

- A Permit Required Confined Space Has One Or More Of The Following Characteristics:
 - Contains Or Has The Potential To Contain A Hazardous Atmosphere.
 - Contains A Material That Has The Potential For Engulfing An Entrant.
 - Has An Internal Configuration Such That An Entrant Could Be Trapped Or Asphyxiated.
 - Contains Any Other Recognized Serious Safety Or Health Hazard.

NEVER ENTER A PERMIT REQUIRED CONFINED SPACE UNLESS PROPERLY TRAINED.



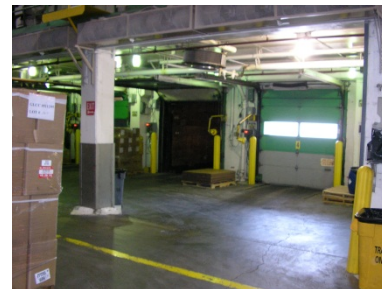
CONTRACTOR SAFETY

- Contractors Are Onsite In Both The Office And In The Plant.
- If You See A Contractor Performing An Unsafe Act Please Immediately Report It To Your Team Lead or Supervisor.
- Contractors Are Required To Follow Plant Safety Rules At All Times.



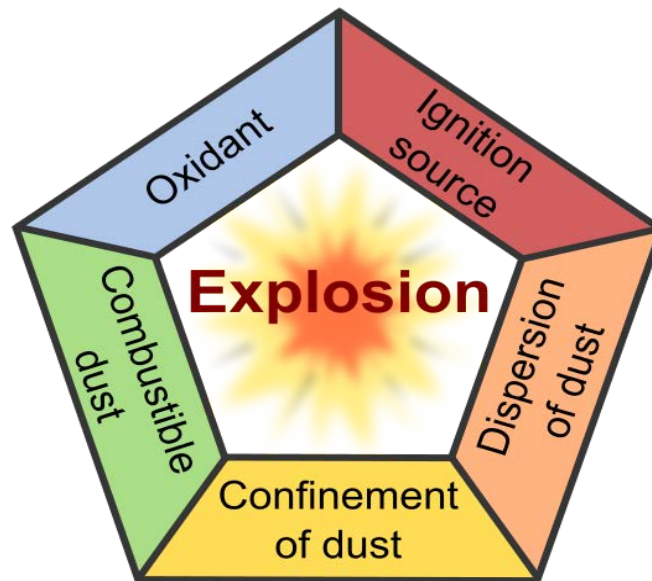
DOCK SAFETY

- All Of Our Locations Have A Dock For Shipments.
- Docks Are Dangerous.
- Follow Your Plant's/Lab's Dock Safety Procedures.
- Do Not Enter The Dock Area Unless You Are Authorized To Do So.



DUST EXPLOSION

- Combustible Dusts Are Finely Divided Combustible Particulate Solids That Present A Flash Fire Hazard Or Explosion Hazard When Suspended In Air Over A Range Of Concentrations.



EMERGENCIES

- Dial 9-911 On Any Phone
- Site Specific Emergency Procedures
 - Facility Specific Emergency Plan
- Drills
- Assembly Areas and Exit Routes
 - Fire
 - Severe Weather/Tornado
 - Spills



ELECTRICAL SAFETY

- Access To Electrical Installations Is Restricted To Those Who Are Trained to Use Them.
- If You Need Help With An Electrical Issue, Please Contact Your Maintenance Department.
- Never Attempt To Fix An Electrical Issue On Your Own.
- Water And Electric Do Not Mix.



ERGONOMICS - OFFICE

- Provide Equipment
 - Chair
 - Monitor Stand
 - Mouse
 - Foot Rest
- Workstation Evaluation
- Stretching
- Report Discomfort



ERGONOMICS - PLANT

- Use Proper Techniques/Tools
- Work Station Design
- Job Training
- Exercise / Stretching
- Report Discomfort



BACK SAFETY

- Check Load
- Lower Slowly, Bend Knees And Keep Back Straight
- Do Not Bend At Waist
- Clear Path, Move Feet To Turn And Do Not Twist
- Use Lift Assists Or Other Tools



FALL PROTECTION

- Fall Protection Is Required For All Elevated Work Activities.
- Fall Protection Includes:
 - Guards
 - Gates
 - Harnesses
 - Lanyards



FORKLIFTS AND POWERED INDUSTRIAL TRUCKS

- Forklifts And Other Industrial Vehicles Are Present In Our Plants.
- Only Licensed Drivers Can Operate Forklifts And Industrial Vehicles.
- Pedestrians Must Watch Out For Forklifts And Industrial Vehicles When In The Plant.
- Forklifts and Industrial Vehicles Can Be Found Outside On Our Campus.



LADDER SAFETY

- Ladders Must Be:
 - Inspected Before Use
 - Removed From Service When Damaged
 - Repaired By A Qualified Person
 - Used In The Manner For Which They Were Made



HAZARD COMMUNICATION

- You Have The Right To Information About The Chemicals With Which You Work.
 - Direct Any Questions To Your Supervisor
- Location of Safety Data Sheets (SDS)
- Read Container Labels



HEARING CONSERVATION

- Hearing Protection Is Required In Some Of Our Plants and Labs.
- Employees Exposed To Excessive Noise Will Be Required To Take A Hearing Exam.
- Hearing Loss Is Serious and We Have a Hearing Conservation Program in Place.



HOUSEKEEPING

- Our Customers Demand A High Quality Product
- We Believe A Clean Workplace Is A Safe Workplace
- Good Housekeeping Prevents Fires And Unnecessary Exposure To Hazards
- Your Contribution Makes A Difference



HOTWORK

- Hotwork Activities Are A Serious Fire Risk.
- Hotwork Operations Outside Of The Designated Hotwork Area Must Be Approved By Written Permit
- Hotwork Includes:
 - Welding, Cutting, Drilling, Heating and Any Heat Generating Process
- Never Look At A Welding Arc



LABORATORY SAFETY

- Laboratory Safety Rules Must Be Followed To Insure A Safe Workplace.
- Basic Laboratory Safety Equipment Includes:
 - Safety Glasses
 - Gloves
 - Lab Coat
 - Footwear



LOCKOUT / TAGOUT

- The Control Of Hazardous Energy Sources Is An Important Part Of Our Commitment To A Safe Workplace.
- Equipment Must Be Isolated From All Energy Sources Before Guards Are Bypassed Or Removed.
- LOTO Is A Requirement, Not An Option.
- Never Tamper With Or Remove LOTO Devices Applied By Another Worker.



MACHINE GUARDING

- Machine Guarding Is In Place To Isolate A Hazard From The Worker.
- Machine Guarding Must Be In Place Before A Machine Is Operated.
- Never Remove, By-Pass Or Alter A Machine Guard.



PERSONAL PROTECTIVE EQUIPMENT

- We Will Provide You With The PPE You Need For Your Job.
- Location Specific PPE Requirements Will be Covered By Your Supervisor.
- You Will Be Expected To Wear, Clean and Maintain Your PPE.



SUMMARY

- We Are Glad You Are Part Of Our Organization.
- We Expect You To Work Safely And Follow The Safety Rules.
- We Welcome Your Active Participation.
- If You Have Any Questions Contact Your Supervisor.

